

Inspection Report

Customer: Wise Components

Part Number, Quantity, Date Code: 29F52SCX, Qty: 2500; DC/Lot: P41AB
Packaging: 83 Tubes: 30 per and 1 Tube: 10 pcs.

Manufacturer: National Semi

Inspection Sample:

1-Source inspected 125 components as per AQL. All 125 were inspected visually and pictures taken of (1) sealed tube.

Source: AVL approved supplier (Tier 1), 0% RMA's for FYA'07.

Conclusion:

The components were genuine, new and original.

The component passed the acetone test.

The leads show no-use and factory original packaging.

The components showed no obvious evidence of prior use such cracks, imperfections or anomalies.

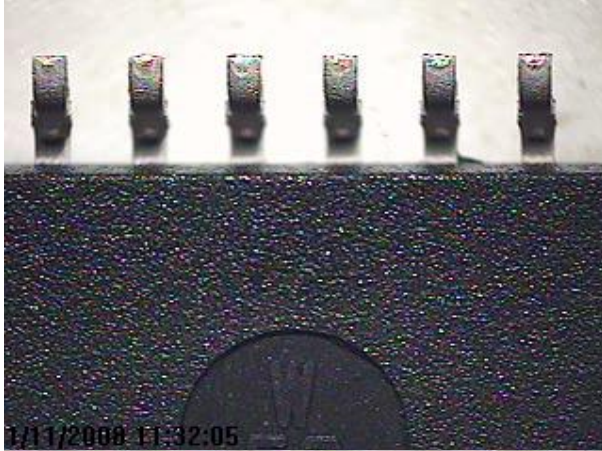
Components were delivered in excess packaging with dessicant and MSL protection.

1-Source suggests to proceed with processing order to customer.





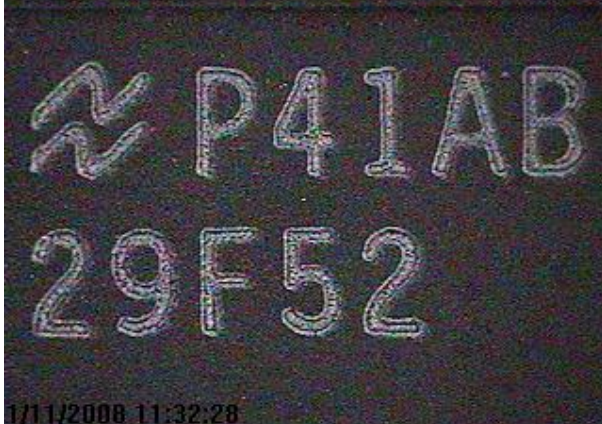
1/11/2008 11:31:41



1/11/2008 11:32:05



1/11/2008 11:32:17



1/11/2008 11:32:28